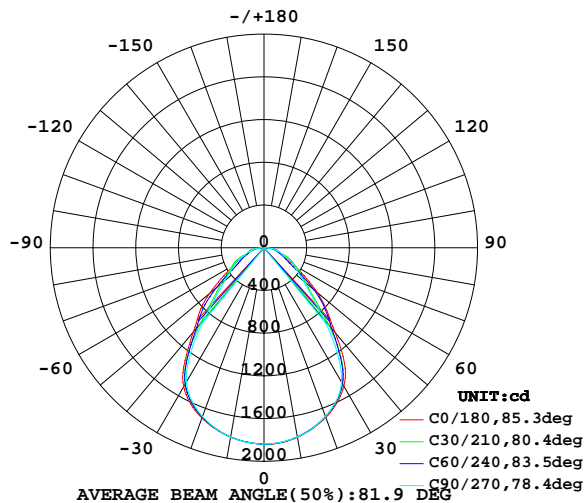


LUMINAIRE PHOTOMETRIC TEST REPORT

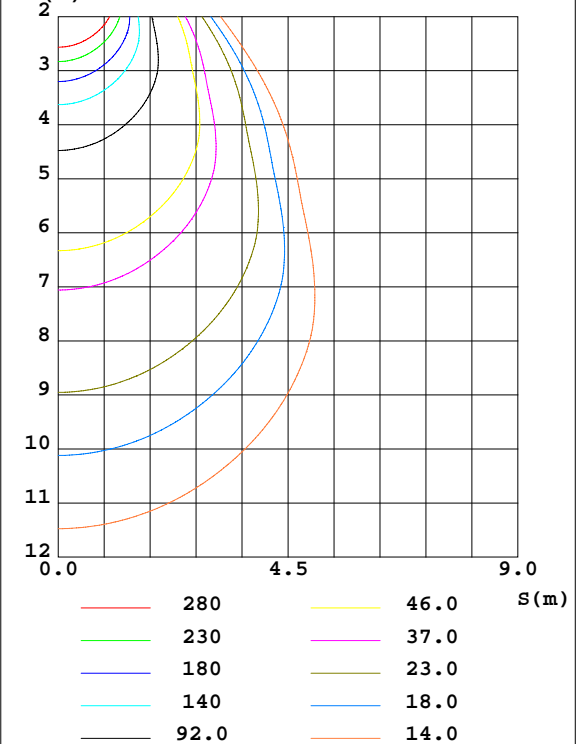
NAME: Panel light	TYPE:LED	WEIGHT:
SPEC.:3012BL	DIM.: 1195*295	SERIAL No.:
MFR.: JT	SUR.:1.195*0.295	Shielding Angle:

DATA OF LAMP		PHOTOMETRIC DATA Eff: 101.81 lm/W			
MODEL	0344102A-940-11	Imax(cd)	1843	S/MH(C0/180)	1.19
NOMINAL POWER(W)	36	LOR(%)	100.0	S/MH(C90/270)	1.13
RATED VOLTAGE(V)	220-240	TOTAL FLUX(lm)	3568.2	η UP,DN(C0-180)	0.1,49.9
NOMINAL FLUX(lm)	3568.23	CIE CLASS	DIRECT	η UP,DN(C180-360)	0.1,49.9
LAMPS INSIDE	1	η up(%)	0.2	CIBSE SHR NOM	1.00
TEST VOLTAGE(V)	220	η down(%)	99.8	CIBSE SHR MAX	1.15

LUMINOUS INTENSITY DISTRIBUTION DIAGRAM



C0 PLANE ISOLUX DIAGRAM (UNIT:lx)



C Range: 0 - 360DEG
C Interval: 30.0DEG
Test Speed: HIGH
Temperature:25.3DEG
Operators:LXF
Test Date:2021-05-27

γ Range: 0 - 180DEG
 γ Interval: 1.0DEG
Test System:EVERFINE GO-2000A_V1 SYSTEM V2.0.295
Humidity:25.0%
Test Distance:7.560m [K=0.9868]
Remarks:

ZONAL FLUX DIAGRAM

ZONAL FLUX DIAGRAM:

γ	C0	C45	C90	C135	C180	C225	C270	C315	γ	Φ zone	Φ total	$\%lum, lamp$
10	1803	1798	1799	1799	1801	1799	1799	1798	0- 10	173.6	173.6	4.87,4.87
20	1691	1682	1682	1689	1697	1689	1682	1682	10- 20	494.0	667.6	18.7,18.7
30	1497	1472	1454	1478	1503	1478	1454	1472	20- 30	734.7	1402	39.3,39.3
40	1036	965.2	871.0	956.8	1029	956.8	871.0	965.2	30- 40	771.3	2174	60.9,60.9
50	651.3	560.2	482.1	554.7	664.3	554.7	482.1	560.2	40- 50	571.9	2745	76.9,76.9
60	321.0	303.4	324.2	306.0	333.1	306.0	324.2	303.4	50- 60	371.9	3117	87.4,87.4
70	173.2	178.6	179.4	178.1	171.1	178.1	179.4	178.6	60- 70	242.0	3359	94.1,94.1
80	105.7	99.69	109.6	100.9	110.9	100.9	109.6	99.69	70- 80	146.1	3506	98.2,98.2
90	4.458	1.424	0.1886	1.704	4.228	1.704	0.1886	1.424	80- 90	56.26	3562	99.8,99.8
100	0.2319	0.2763	0.3465	0.2741	0.2191	0.2741	0.3465	0.2763	90-100	0.4112	3562	99.8,99.8
110	0.4072	0.4583	0.5308	0.4427	0.3854	0.4427	0.5308	0.4583	100-110	0.3788	3563	99.8,99.8
120	0.6875	0.7672	0.8473	0.7456	0.6619	0.7456	0.8473	0.7672	110-120	0.5874	3563	99.9,99.9
130	1.109	1.184	1.246	1.147	1.061	1.147	1.246	1.184	120-130	0.8530	3564	99.9,99.9
140	1.526	1.612	1.667	1.555	1.487	1.555	1.667	1.612	130-140	1.066	3565	99.9,99.9
150	1.942	2.063	2.092	1.949	1.881	1.949	2.092	2.063	140-150	1.123	3566	99.9,99.9
160	2.434	2.507	2.487	2.373	2.372	2.373	2.487	2.507	150-160	1.022	3567	100,100
170	2.911	2.846	2.802	2.759	2.846	2.759	2.802	2.846	160-170	0.7431	3568	100,100
180	3.083	2.973	2.930	2.945	3.065	2.945	2.930	2.973	170-180	0.2759	3568	100,100
DEG	LUMINOUS INTENSITY:cd									UNIT:lm		

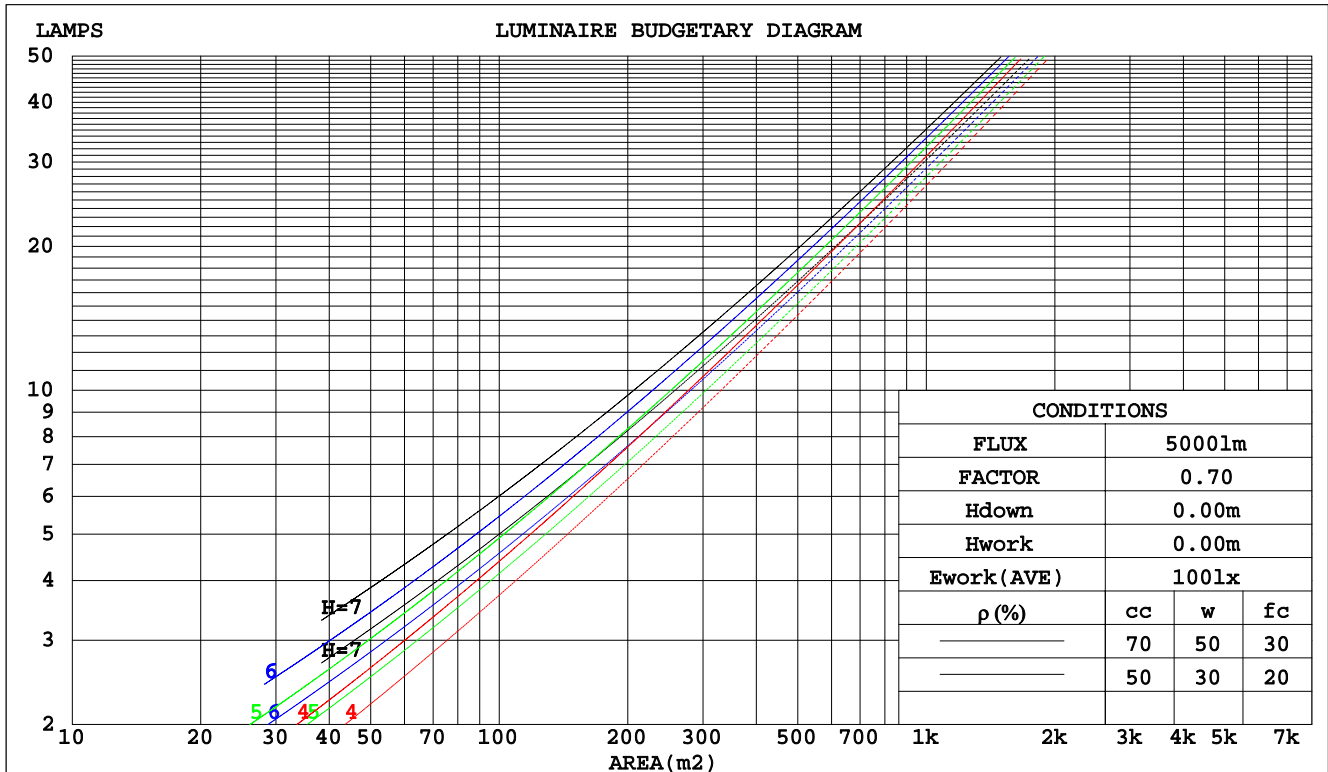
C Range: 0 - 360DEG
 C Interval: 30.0DEG
 Test Speed: HIGH
 Temperature:25.3DEG
 Operators:LXF
 Test Date:2021-05-27

γ Range: 0 - 180DEG
 γ Interval: 1.0DEG
 Test System:EVERFINE GO-2000A_V1 SYSTEM V2.0.295
 Humidity:25.0%
 Test Distance:7.560m [K=0.9868]
 Remarks:

CU AND LUMINAIRE BUDGETARY ESTIMATE DIAGRAM

NAME: Panel light	TYPE:LED	WEIGHT:
SPEC.:3012BL	DIM.: 1195*295	SERIAL No.:
MFR.: JT	SUR.:1.195*0.295	Shielding Angle:

pcc	80%			70%			50%			30%			10%			0
pw	50%	30%	10%	50%	30%	10%	50%	30%	10%	50%	30%	10%	50%	30%	10%	0
pfc	20%			20%			20%			20%			20%			0
RCR	RCR:Room Cavity Ratio						Coefficients of Utilization(CU)									
0.0	1.19	1.19	1.19	1.16	1.16	1.16	1.11	1.11	1.11	1.06	1.06	1.06	1.02	1.02	1.02	.00
1.0	1.06	1.02	.99	1.04	1.01	.98	.90	.97	.94	.96	.94	.92	.92	.90	.89	.87
2.0	.95	.89	.84	.93	.88	.83	.89	.85	.81	.86	.82	.79	.83	.80	.77	.75
3.0	.85	.78	.72	.84	.77	.72	.81	.75	.70	.78	.73	.69	.75	.71	.68	.66
4.0	.77	.69	.63	.76	.68	.63	.73	.67	.62	.71	.65	.61	.69	.64	.60	.58
5.0	.70	.62	.56	.69	.61	.56	.67	.60	.55	.65	.59	.54	.63	.58	.54	.52
6.0	.64	.56	.50	.63	.55	.50	.61	.54	.49	.59	.53	.49	.58	.53	.48	.47
7.0	.58	.50	.45	.58	.50	.45	.56	.49	.44	.55	.49	.44	.53	.48	.44	.42
8.0	.54	.46	.41	.53	.46	.41	.52	.45	.40	.51	.45	.40	.50	.44	.40	.38
9.0	.50	.42	.37	.49	.42	.37	.48	.42	.37	.47	.41	.37	.46	.41	.37	.35
10.0	.46	.39	.34	.46	.39	.34	.45	.38	.34	.44	.38	.34	.43	.38	.34	.32



C Range: 0 - 360DEG
 C Interval: 30.0DEG
 Test Speed: HIGH
 Temperature:25.3DEG
 Operators:LXF
 Test Date:2021-05-27

γ Range: 0 - 180DEG
 γ Interval: 1.0DEG
 Test System:EVERFINE GO-2000A_V1 SYSTEM V2.0.295
 Humidity:25.0%
 Test Distance:7.560m [K=0.9868]
 Remarks:

WEC AND CCEC

NAME: Panel light	TYPE:LED	WEIGHT:
SPEC.:3012BL	DIM.: 1195*295	SERIAL No.:
MFR.: JT	SUR.:1.195*0.295	Shielding Angle:

pcc	80%			70%			50%			30%			10%			0
pw	50%	30%	10%	50%	30%	10%	50%	30%	10%	50%	30%	10%	50%	30%	10%	0
pfc	20%			20%			20%			20%			20%			0
RCR	RCR:Room Cavity Ratio						Wall Exitance Coefficients(WEC)									
0.0																
1.0	.265	.151	.048	.258	.147	.047	.245	.140	.045	.233	.134	.043	.222	.128	.041	
2.0	.250	.137	.042	.244	.134	.041	.232	.129	.040	.222	.124	.039	.212	.120	.038	
3.0	.233	.124	.037	.228	.122	.037	.218	.118	.036	.209	.114	.035	.200	.111	.034	
4.0	.217	.113	.033	.213	.111	.033	.204	.108	.032	.196	.105	.032	.188	.102	.031	
5.0	.203	.104	.030	.199	.102	.030	.191	.100	.029	.184	.097	.029	.177	.095	.028	
6.0	.190	.095	.027	.187	.094	.027	.180	.092	.027	.173	.090	.026	.167	.088	.026	
7.0	.179	.088	.025	.175	.087	.025	.169	.086	.025	.163	.084	.024	.158	.082	.024	
8.0	.168	.082	.023	.165	.081	.023	.160	.080	.023	.155	.078	.023	.150	.077	.022	
9.0	.159	.077	.021	.156	.076	.021	.151	.075	.021	.147	.073	.021	.142	.072	.021	
10.0	.150	.072	.020	.148	.072	.020	.144	.070	.020	.139	.069	.020	.135	.068	.020	

pcc	80%			70%			50%			30%			10%			0
pw	50%	30%	10%	50%	30%	10%	50%	30%	10%	50%	30%	10%	50%	30%	10%	0
pfc	20%			20%			20%			20%			20%			0
RCR	RCR:Room Cavity Ratio						Ceiling Cavity Exitance Coefficients(CCEC)									
0.0	.192	.192	.192	.164	.164	.164	.112	.112	.112	.064	.064	.064	.021	.021	.021	
1.0	.179	.158	.139	.153	.136	.120	.105	.093	.083	.060	.054	.048	.019	.017	.016	
2.0	.168	.134	.104	.144	.115	.090	.099	.080	.063	.057	.046	.037	.018	.015	.012	
3.0	.159	.115	.081	.136	.100	.070	.093	.069	.049	.054	.040	.029	.017	.013	.010	
4.0	.150	.102	.064	.129	.088	.056	.089	.061	.039	.051	.036	.023	.017	.012	.008	
5.0	.143	.091	.053	.123	.079	.046	.084	.055	.032	.049	.032	.019	.016	.011	.006	
6.0	.136	.082	.044	.117	.071	.038	.081	.050	.027	.047	.029	.016	.015	.010	.005	
7.0	.129	.075	.037	.111	.065	.033	.077	.046	.023	.045	.027	.014	.014	.009	.005	
8.0	.123	.069	.032	.106	.060	.028	.073	.042	.020	.043	.025	.012	.014	.008	.004	
9.0	.118	.064	.028	.101	.056	.025	.070	.039	.018	.041	.023	.010	.013	.008	.003	
10.0	.112	.060	.025	.097	.052	.022	.067	.037	.016	.039	.022	.009	.013	.007	.003	

C Range: 0 - 360DEG
C Interval: 30.0DEG
Test Speed: HIGH
Temperature:25.3DEG
Operators:LXF
Test Date:2021-05-27

γ Range: 0 - 180DEG
γ Interval: 1.0DEG
Test System:EVERFINE GO-2000A_V1 SYSTEM V2.0.295
Humidity:25.0%
Test Distance:7.560m [K=0.9868]
Remarks:

UGR(Unified Glare Rating) Table

NAME: Panel light					TYPE:LED			WEIGHT:			
SPEC.:3012BL					DIM.: 1195*295			SERIAL No.:			
MFR.: JT					SUR.:1.195*0.295			Shielding Angle:			
ceiling/cavity	0.7	0.7	0.5	0.5	0.3	0.7	0.7	0.5	0.5	0.3	
walls	0.5	0.3	0.5	0.3	0.3	0.5	0.3	0.5	0.3	0.3	
working plane	0.2	0.2	0.2	0.2	0.2	0.2	0.2	0.2	0.2	0.2	
Room dimensions		Viewed crosswise					Viewed endwise				
x = 2H y = 2H		14.8	16.1	15.1	16.3	16.5	14.3	15.6	14.5	15.8	16.0
3H		15.7	16.9	16.0	17.1	17.4	15.2	16.4	15.5	16.6	16.9
4H		16.0	17.2	16.3	17.4	17.7	15.7	16.9	16.0	17.1	17.4
6H		16.5	17.6	16.8	17.8	18.1	16.3	17.4	16.6	17.7	17.9
8H		16.7	17.8	17.0	18.0	18.3	16.6	17.7	16.9	17.9	18.2
12H		16.9	17.9	17.2	18.2	18.5	16.8	17.8	17.2	18.1	18.4
4H 2H		15.1	16.2	15.4	16.5	16.7	14.6	15.8	14.9	16.0	16.3
3H		16.2	17.2	16.5	17.5	17.8	15.7	16.7	16.0	17.0	17.3
4H		16.7	17.6	17.1	17.9	18.3	16.4	17.3	16.8	17.6	18.0
6H		17.3	18.1	17.7	18.5	18.8	17.2	18.0	17.6	18.4	18.8
8H		17.6	18.4	18.0	18.7	19.1	17.6	18.4	18.0	18.7	19.1
12H		17.9	18.6	18.3	19.0	19.4	17.9	18.6	18.4	19.0	19.4
8H 4H		16.9	17.7	17.3	18.0	18.4	16.7	17.4	17.1	17.8	18.2
6H		17.6	18.3	18.1	18.7	19.1	17.7	18.4	18.2	18.8	19.2
8H		18.1	18.6	18.5	19.1	19.5	18.3	18.8	18.7	19.2	19.7
12H		18.5	18.9	18.9	19.4	19.9	18.7	19.2	19.2	19.6	20.1
12H 4H		16.9	17.6	17.4	18.0	18.4	16.7	17.4	17.1	17.8	18.2
6H		17.7	18.3	18.2	18.7	19.2	17.8	18.4	18.3	18.8	19.2
8H		18.2	18.7	18.7	19.1	19.6	18.4	18.9	18.9	19.3	19.8
Variations with the observer position at spacings:											
S = 1.0H		+ 0.3 / - 0.4					+ 0.4 / - 0.4				
1.5H		+ 0.3 / - 0.2					+ 0.2 / - 0.4				
2.0H		+ 0.8 / - 0.5					+ 0.6 / - 0.5				

CIE Pub.117 Corrected 3568 lm Total Lamp Luminous Flux.(8log(F/F0) = 4.4)

C Range: 0 - 360DEG
C Interval: 30.0DEG
Test Speed: HIGH
Temperature:25.3DEG
Operators:LXF
Test Date:2021-05-27

γ Range: 0 - 180DEG
γ Interval: 1.0DEG
Test System:EVERFINE GO-2000A_V1 SYSTEM V2.0.295
Humidity:25.0%
Test Distance:7.560m [K=0.9868]
Remarks:

UTILIZATION FACTORS TABLE

NAME: Panel light	TYPE:LED	WEIGHT:
SPEC.:3012BL	DIM.: 1195*295	SERIAL No.:
MFR.: JT	SUR.:1.195*0.295	Shielding Angle:

REFLECTANCE										
Ceiling	0.8	0.8	0.8	0.7	0.7	0.7	0.5	0.5	0.5	0
Walls	0.7	0.5	0.3	0.7	0.5	0.3	0.7	0.5	0.3	0
Working plane	0.2	0.2	0.2	0.2	0.2	0.2	0.2	0.2	0.2	0
ROOM INDEX	UTILIZATION FACTORS(PERCENT) k(RI) x RCR = 5									
k = 0.60	67	57	51	67	57	51	66	57	51	46
0.80	77	67	61	76	67	61	74	66	60	55
1.00	84	75	69	83	74	69	81	75	68	62
1.25	90	82	76	89	81	75	86	80	75	68
1.50	94	86	81	93	86	80	90	84	79	73
2.00	100	93	88	98	92	87	95	90	85	78
2.50	103	97	92	101	95	91	97	93	89	81
3.00	106	100	95	104	98	94	100	96	92	84
4.00	109	104	100	106	102	99	102	99	96	88
5.00	111	107	103	108	105	102	104	101	99	90
ROOM INDEX	UF(total)									Direct
According to DIN EN 13032-2 2004										
Suspended										
SHRNM = 1.25										

C Range: 0 - 360DEG
C Interval: 30.0DEG
Test Speed: HIGH
Temperature:25.3DEG
Operators:LXF
Test Date:2021-05-27

γ Range: 0 - 180DEG
 γ Interval: 1.0DEG
Test System:EVERFINE GO-2000A_V1 SYSTEM V2.0.295
Humidity:25.0%
Test Distance:7.560m [K=0.9868]
Remarks:

ISOCANDELA DIAGRAM

NAME: Panel light	TYPE:LED	WEIGHT:
SPEC.:3012BL	DIM.: 1195*295	SERIAL No.:
MFR.: JT	SUR.:1.195*0.295	Shielding Angle:

Conical surface Flux(90deg):

2484.2 lm

%lum = 69.6%

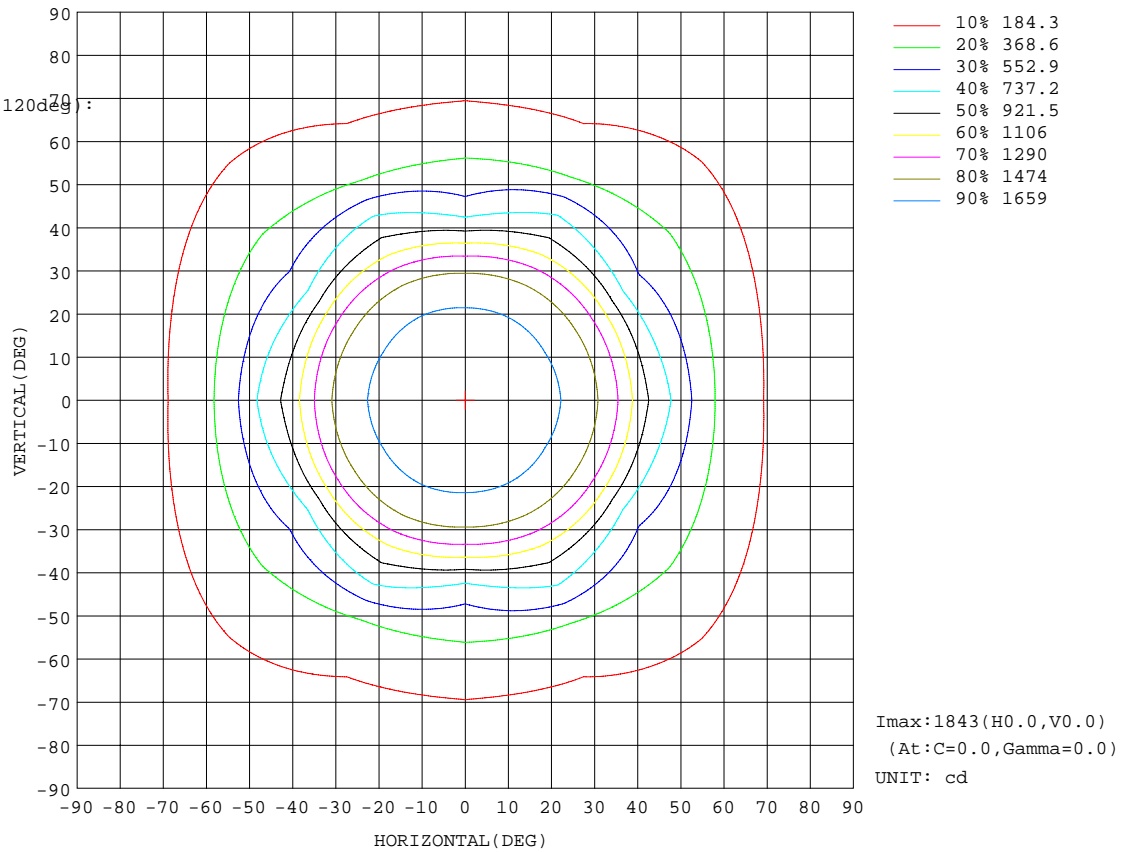
%lamp = 69.6%

Conical surface Flux(120deg):

3117.4 lm

%lum = 87.4%

%lamp = 87.4%

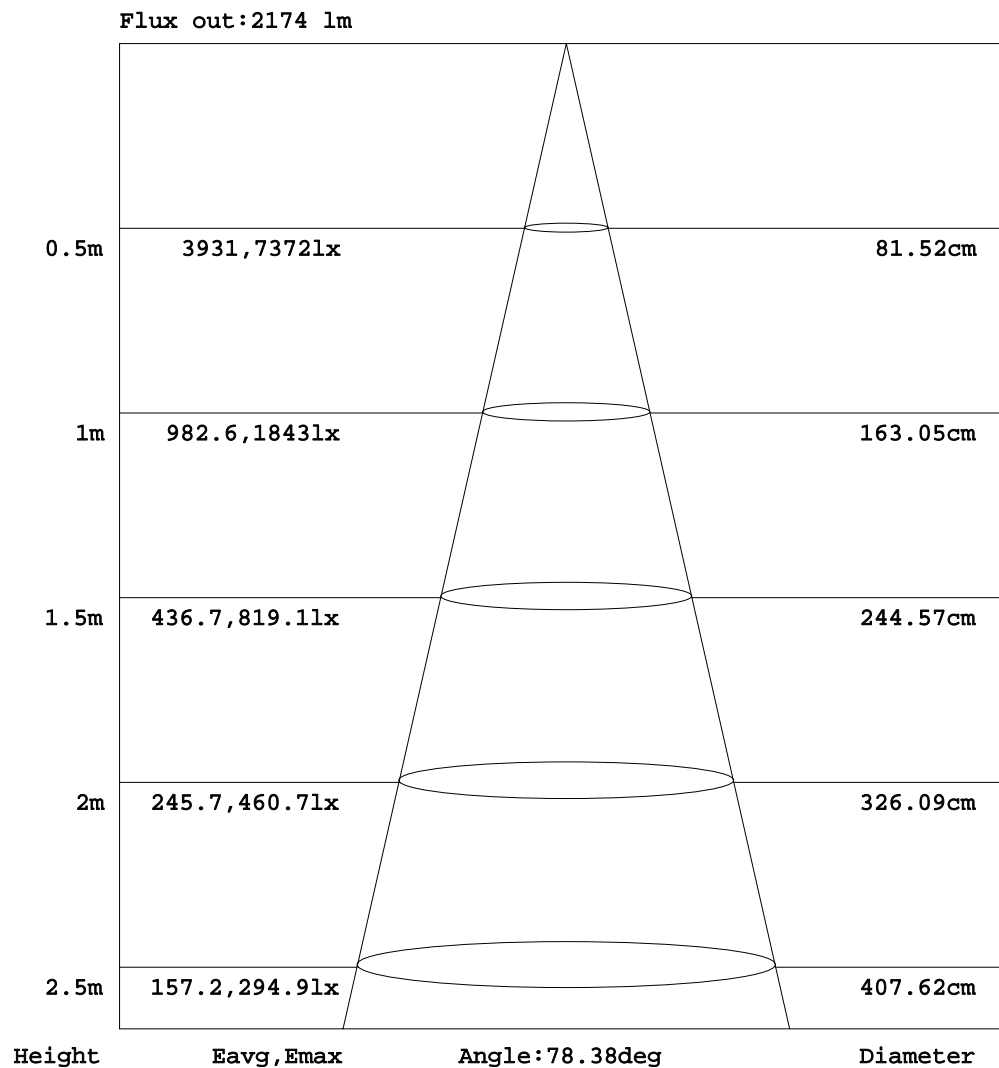


C Range: 0 - 360DEG
C Interval: 30.0DEG
Test Speed: HIGH
Temperature:25.3DEG
Operators:LXF
Test Date:2021-05-27

γ Range: 0 - 180DEG
γ Interval: 1.0DEG
Test System:EVERFINE GO-2000A_V1 SYSTEM V2.0.295
Humidity:25.0%
Test Distance:7.560m [K=0.9868]
Remarks:

AAI Figure

NAME: Panel light	TYPE:LED	WEIGHT:
SPEC.:3012BL	DIM.: 1195*295	SERIAL No.:
MFR.: JT	SUR.:1.195*0.295	Shielding Angle:



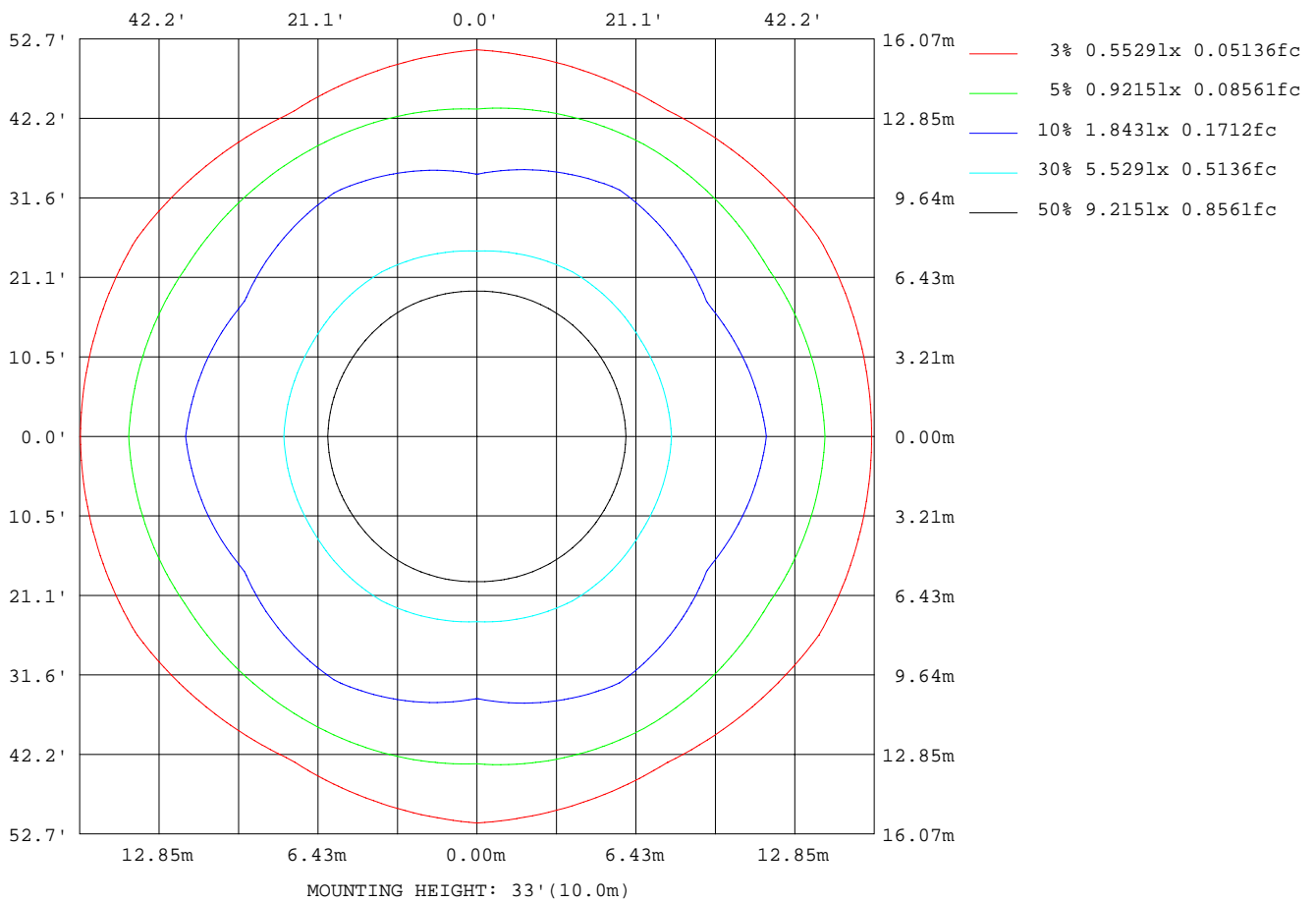
Note:The Curves indicate the illuminated area and the average illumination when the luminaire is at different distance.

C Range: 0 - 360DEG
 C Interval: 30.0DEG
 Test Speed: HIGH
 Temperature:25.3DEG
 Operators:LXF
 Test Date:2021-05-27

γ Range: 0 - 180DEG
 γ Interval: 1.0DEG
 Test System:EVERFINE GO-2000A_V1 SYSTEM V2.0.295
 Humidity:25.0%
 Test Distance:7.560m [K=0.9868]
 Remarks:

ISOLUX DIAGRAM

NAME: Panel light	TYPE:LED	WEIGHT:
SPEC.:3012BL	DIM.: 1195*295	SERIAL No.:
MFR.: JT	SUR.:1.195*0.295	Shielding Angle:



C Range: 0 - 360DEG
C Interval: 30.0DEG
Test Speed: HIGH
Temperature:25.3DEG
Operators:LXF
Test Date:2021-05-27

γ Range: 0 - 180DEG
 γ Interval: 1.0DEG
Test System:EVERFINE GO-2000A_V1 SYSTEM V2.0.295
Humidity:25.0%
Test Distance:7.560m [K=0.9868]
Remarks:

LED Avg.L Report

NAME: Panel light	TYPE:LED	WEIGHT:
SPEC.:3012BL	DIM.: 1195*295	SERIAL No.:
MFR.: JT	SUR.:1.195*0.295	Shielding Angle:

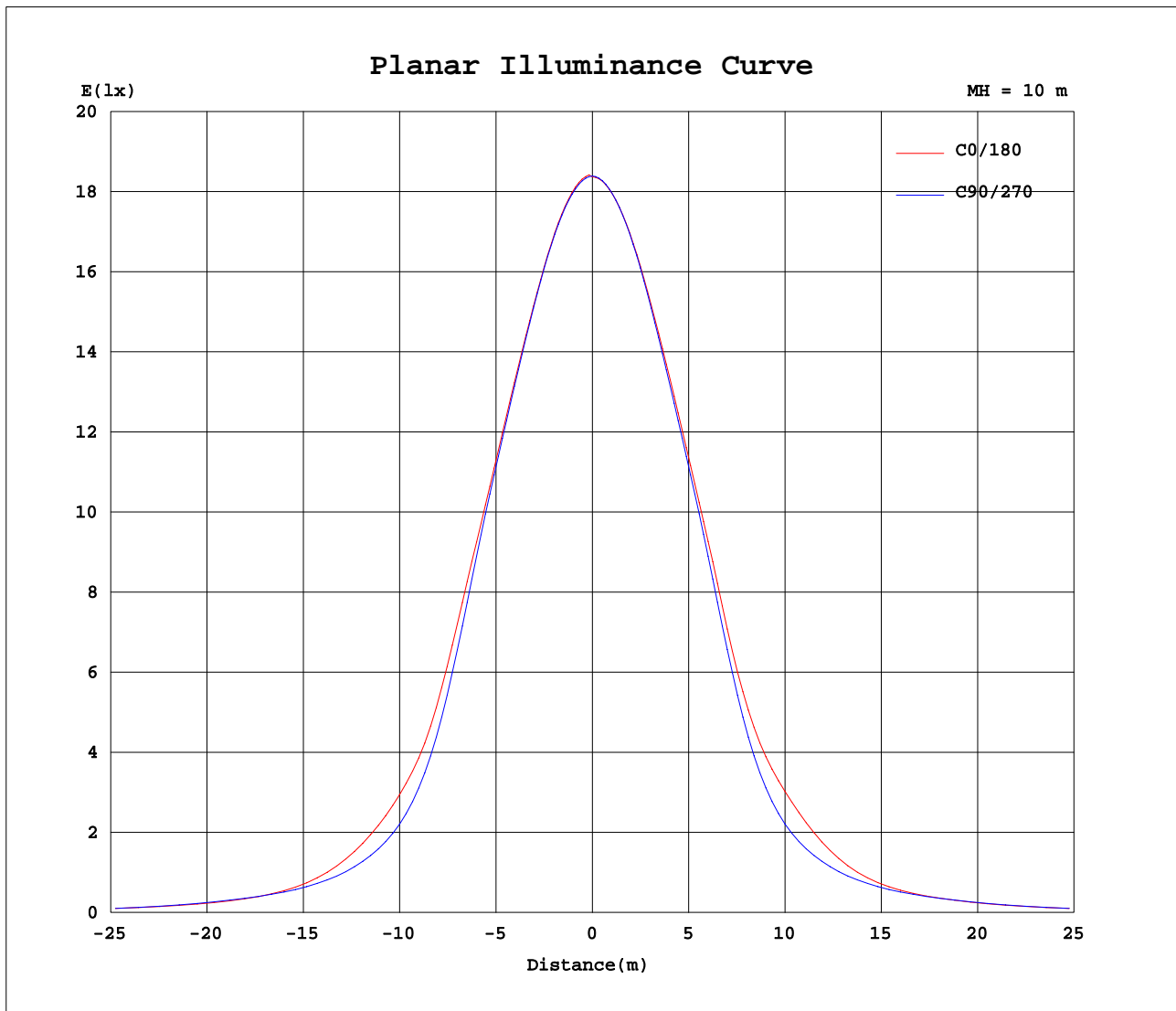
AvgL	cd/m2
L_0~180(65)av	1641
L_0~180(75)av	1504
L_0~180(85)av	1777
L_90~270(65)av	1714
L_90~270(75)av	1629
L_90~270(85)av	1843
L_45(65)av	1651
L_45(75)av	1487
L_45(85)av	1706

Standard: GB/T 29293-2012

C Range: 0 - 360DEG
C Interval: 30.0DEG
Test Speed: HIGH
Temperature:25.3DEG
Operators:LXF
Test Date:2021-05-27

γ Range: 0 - 180DEG
 γ Interval: 1.0DEG
Test System:EVERFINE GO-2000A_V1 SYSTEM V2.0.295
Humidity:25.0%
Test Distance:7.560m [K=0.9868]
Remarks:

Planar Illuminance Curve



C Range: 0 - 360DEG
C Interval: 30.0DEG
Test Speed: HIGH
Temperature: 25.3DEG
Operators: LXF
Test Date: 2021-05-27

γ Range: 0 - 180DEG
 γ Interval: 1.0DEG
Test System: EVERFINE GO-2000A_V1 SYSTEM V2.0.295
Humidity: 25.0%
Test Distance: 7.560m [K=0.9868]
Remarks:

LUMINOUS DISTRIBUTION INTENSITY DATA

NAME: Panel light	TYPE:LED	WEIGHT:
SPEC.:3012BL	DIM.: 1195*295	SERIAL No.:
MFR.: JT	SUR.:1.195*0.295	Shielding Angle:

Table--1

UNIT: cd

C(DEG) γ (DEG)	0	30	60	90	120	150	180	210	240	270	300	330							
0	1843	1841	1841	1839	1839	1837	1837	1837	1839	1839	1841	1841							
5	1832	1830	1829	1828	1827	1826	1827	1826	1827	1828	1829	1830							
10	1803	1799	1798	1799	1798	1799	1801	1799	1798	1799	1798	1799							
15	1754	1749	1749	1751	1752	1753	1757	1753	1752	1751	1749	1749							
20	1691	1681	1683	1682	1689	1689	1697	1689	1689	1682	1683	1681							
25	1609	1594	1595	1591	1602	1603	1618	1603	1602	1591	1595	1594							
30	1497	1474	1470	1454	1477	1479	1503	1479	1477	1454	1470	1474							
35	1312	1263	1247	1195	1246	1255	1289	1255	1246	1195	1247	1263							
40	1036	942	988	871	986	928	1029	928	986	871	988	942							
45	833	660	809	625	809	669	855	669	809	625	809	660							
50	651	511	609	482	583	526	664	526	583	482	609	511							
55	459	419	391	386	365	415	460	415	365	386	391	419							
60	321	342	265	324	269	343	333	343	269	324	265	342							
65	240	276	204	254	210	288	245	288	210	254	204	276							
70	173	198	159	179	162	195	171	195	162	179	159	198							
75	127	131	138	148	148	126	146	126	148	148	138	131							
80	106	85.9	114	110	114	87.9	111	87.9	114	110	114	85.9							
85	57.5	48.3	58.1	56.2	54.7	48.5	50.9	48.5	54.7	56.2	58.1	48.3							
90	4.46	2.32	0.53	0.19	0.61	2.80	4.23	2.80	0.61	0.19	0.53	2.32							
95	0.34	0.24	0.23	0.27	0.33	0.22	0.58	0.22	0.33	0.27	0.23	0.24							
100	0.23	0.29	0.26	0.35	0.26	0.29	0.22	0.29	0.26	0.35	0.26	0.29							
105	0.31	0.36	0.35	0.43	0.35	0.36	0.29	0.36	0.35	0.43	0.35	0.36							
110	0.41	0.46	0.46	0.53	0.44	0.44	0.39	0.44	0.44	0.53	0.46	0.46							
115	0.53	0.58	0.60	0.67	0.58	0.57	0.51	0.57	0.58	0.67	0.60	0.58							
120	0.69	0.75	0.78	0.85	0.76	0.73	0.66	0.73	0.76	0.85	0.78	0.75							
125	0.89	0.96	0.97	1.04	0.94	0.93	0.85	0.93	0.94	1.04	0.97	0.96							
130	1.11	1.19	1.17	1.25	1.14	1.15	1.06	1.15	1.14	1.25	1.17	1.19							
135	1.33	1.42	1.38	1.46	1.37	1.37	1.28	1.37	1.37	1.46	1.38	1.42							
140	1.53	1.62	1.60	1.67	1.55	1.56	1.49	1.56	1.55	1.67	1.60	1.62							
145	1.74	1.84	1.83	1.88	1.76	1.75	1.67	1.75	1.76	1.88	1.83	1.84							
150	1.94	2.07	2.06	2.09	1.96	1.94	1.88	1.94	1.96	2.09	2.06	2.07							
155	2.17	2.31	2.26	2.29	2.17	2.15	2.11	2.15	2.17	2.29	2.26	2.31							
160	2.43	2.56	2.46	2.49	2.39	2.36	2.37	2.36	2.39	2.49	2.46	2.56							
165	2.68	2.76	2.64	2.66	2.59	2.59	2.62	2.59	2.59	2.66	2.64	2.76							
170	2.91	2.93	2.77	2.80	2.74	2.78	2.85	2.78	2.74	2.80	2.77	2.93							
175	3.04	3.01	2.87	2.91	2.85	2.92	3.01	2.92	2.85	2.91	2.87	3.01							
180	3.08	3.03	2.92	2.93	2.91	2.98	3.07	2.98	2.91	2.93	2.92	3.03							

C Range: 0 - 360DEG
 C Interval: 30.0DEG
 Test Speed: HIGH
 Temperature:25.3DEG
 Operators:LXF
 Test Date:2021-05-27

γ Range: 0 - 180DEG
 γ Interval: 1.0DEG
 Test System:EVERFINE GO-2000A_V1 SYSTEM V2.0.295
 Humidity:25.0%
 Test Distance:7.560m [K=0.9868]
 Remarks: